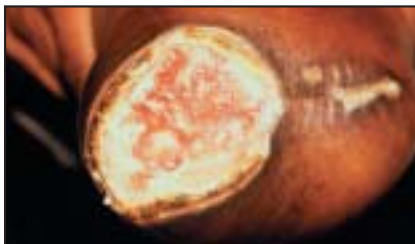


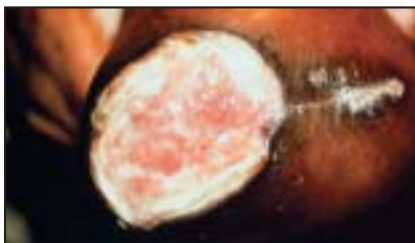
CASE STUDY

***PolyMem*[®] DRESSING ON KNEE AMPUTATION**

Ferris Mfg. Corp., Burr Ridge, IL



DAY 1



DAY 7



DAY 23



DAY 28

CASE STUDY:

A 74 year old African American male suffering from peripheral vascular disease [PVD] required a below knee amputation on his right leg.

The wound had been treated to no avail with wet-to-dry dressings for eight weeks prior to the PolyMem dressing application. A white slough had developed around the perimeter of the wound, but started to diminish a few days after the regimen began, that included the use of non-adhesive PolyMem pad dressings.

The PolyMem dressings were initially changed twice per day due to heavy drainage. By the seventh week the healing process was well underway and dressing changes were reduced to once a day. The skin integrity was good, the wound was clean and non-infected, and was smaller due to newly formed epithelium.

The wound was completely healed after fourteen weeks of the PolyMem total wound care treatment. Moreover, skin integrity was excellent and there were no signs of edema.

DESCRIPTION OF POLYMEM WOUND DRESSINGS:

PolyMem wound care dressings consist of a polyurethane membrane matrix on a semipermeable thin film backing. The hydrophilic membrane contains a wound cleanser, a moisturizer and a superabsorbent starch copolymer.

The **Semipermeable Film Backing** provides a bacterial barrier while allowing gas (O₂ and CO₂) exchange and maintains an ideal moisture vapor transmission rate. The transparent film backing allows visual inspection of the membrane to determine the need for a dressing change.

The **Polyurethane Membrane Matrix** wicks away up to ten times its weight in exudate. The membrane contains a cleanser, moisturizer and superabsorbent starch copolymer.

The **Wound Cleanser** (F68 Surfactant) contained in the dressing is a mild wound cleansing agent activated by moisture and gradually released into the wound bed, keeping the wound clean throughout the entire wound healing process.

The **Glycerin**, a moisturizer contained in the dressing, keeps the dressing from adhering to the wound bed. Glycerin also reduces odor, conserves living fat cells, reduces hypergranulation, soothes traumatized tissues and supports autolytic debridement.

The **Superabsorbent Starch Copolymer** contained in the dressing draws, absorbs and holds excess fluids in the hydrophilic membrane. These fluids, which are known to contain natural growth factors and nutrients, concentrate at the wound site, accelerating wound closure.

CONCLUSIONS:

- Complete healing of wound
- Ease of application and removal of dressing
- All-in-one dressing eliminates the need for additional wound care products
- Pain relief to the patient



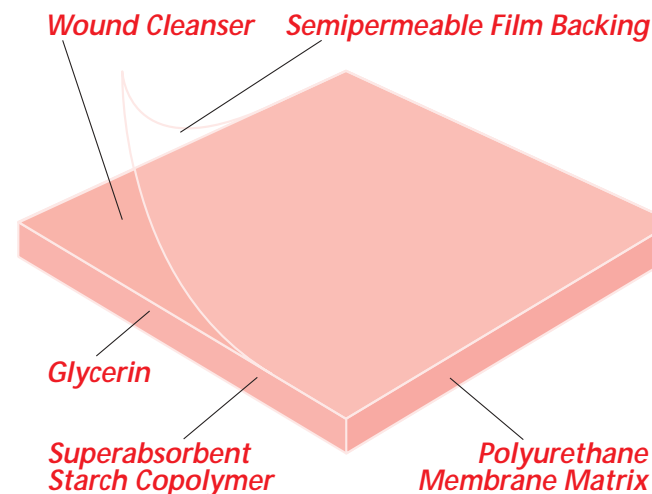
DAY 53



DAY 73



DAY 102



FERRIS MFG. CORP.
 16W300 83rd Street • Burr Ridge, IL 60527 U.S.A.
 Phones: 630-887-9797 800 POLYMEM (800-765-9636)
 Fax: 630-887-1008
 Web Address: <http://www.ferrispolyem.com>
 e-mail: info@ferrispolyem.com